

PORTALS

Curated by Stephanie Sherwood

Erin Harmon



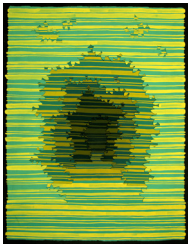
The Life Of The Moon May Be Inside

2017

Wall installation with ceramic, nails, acrylic, and muslin

28 x 35 inches

\$2,000



Echo

2015

Gouache on paper, hand-cut and collaged

16 x 12.5 inches

Not for sale.



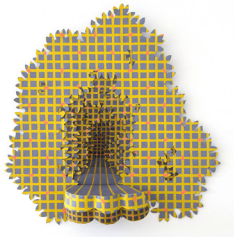
Occulus

2015

Gouache on paper, hand-cut and collaged

18 x 15 inches

\$3,000



Lattice Supertemporal

2017

Gouache, tyvek, and papier-mâché

19.5 x 9 x 4

\$3,000

PORTALS

Curated by Stephanie Sherwood

Erika Lizée



The Subtle Body Prepares for Emergence
2021

Acrylic, Duralar, plastic

30 x 8 x 3 feet

\$25,000

PORTALS

Curated by Stephanie Sherwood

Elana Mann



histophone

2014 - 2016

Plastic and enamel on metal and felt stand, edition of 10

5.25 x 13.25 x 5.5 inches

\$1,200, with stand \$1,600



histophone

2014 - 2016

Plastic and enamel on metal and felt stand, edition of 10

5.25 x 13.25 x 5.5 inches

\$1,200, with stand \$1,600



histophone

2014 - 2016

Plastic, leather, hardware

5.25 x 13.25 x 5.5 inches

\$1,200, with strap and hook \$1,700



Our work is never done (unfinished business)

2020 - 2021

Fiberglass, resin, enamel and paint

Originally commissioned and produced by Artpace San Antonio

28 x 28 x 120 inches

\$30,000

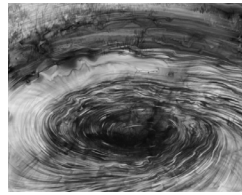
PORTALS

Curated by Stephanie Sherwood

Yevgeniya Mikhailik



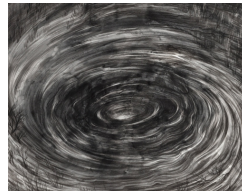
Barrow I,
Barrow Series, 2021
Graphite on paper, mounted on
panel. 11 x 14 inches
\$4,000 set of eight, \$500
individually



Barrow VI,
Barrow Series, 2021
Graphite on paper, mounted on
panel. 11 x 14 inches
\$4,000 set of eight, \$500
individually



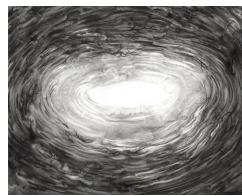
Barrow II,
Barrow Series, 2021
Graphite on paper, mounted on
panel. 11 x 14 inches
\$4,000 set of eight, \$500
individually



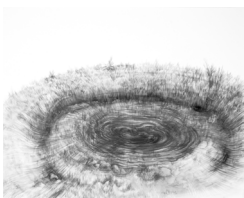
Barrow VII,
Barrow Series, 2021
Graphite on paper, mounted on
panel. 11 x 14 inches
\$4,000 set of eight, \$500
individually



Barrow III,
Barrow Series, 2021
Graphite on paper, mounted on
panel. 11 x 14 inches
\$4,000 set of eight, \$500
individually



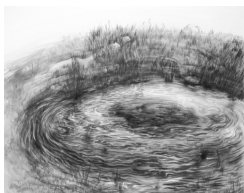
Barrow VIII,
Barrow Series, 2021
Graphite on paper, mounted on
panel. 11 x 14 inches
\$4,000 set of eight, \$500
individually



Barrow IV,
Barrow Series, 2021
Graphite on paper, mounted on
panel. 11 x 14 inches
\$4,000 set of eight, \$500
individually



Gate, 2019
Ink, wax pastel on paper,
mounted on panel.
\$500



Barrow V
Barrow Series, 2021
Graphite on paper, mounted on
panel. 11 x 14 inches
\$4,000 set of eight, \$500
individually



Kidney, 2019
Ink, wax pastel on paper, mount-
ed on panel.
\$500

PORTALS

Curated by Stephanie Sherwood

Alicia Piller



Blue Memories, Flooding Back. Navigating Tongva Waters.
2021

Site-specific installation: vinyl, foam, latex balloons, resin, gel
medium, plastic, paper, rope, wood, wire.

116 x 119.5 x 75 inches

\$25,000

PORTALS

Curated by Stephanie Sherwood

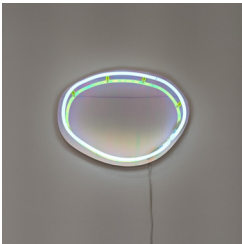
Esther Ruiz



Well XXV
2020
Neon, MDF, laminate, paint, hardware
31.5 x 15.5 x 3 inches
\$4,200



Well XIII
2017
Neon, MDF, acrylic, paint, hardware
24 x 18 x 3 inches
Not for sale.
Courtesy of Samantha Hughes & Jonathan Ryan



Well XVI
2019
Neon, MDF, iridescent acrylic, paint, hardware
19 x 14 x 3 inches
\$3,000
Courtesy of the Artist and Carvalho Park, NY



Well XV
2017
Neon, MDF, acrylic, paint, hardware
43 x 26 x 3 inches
Not for sale.
Courtesy of Nick McPhail

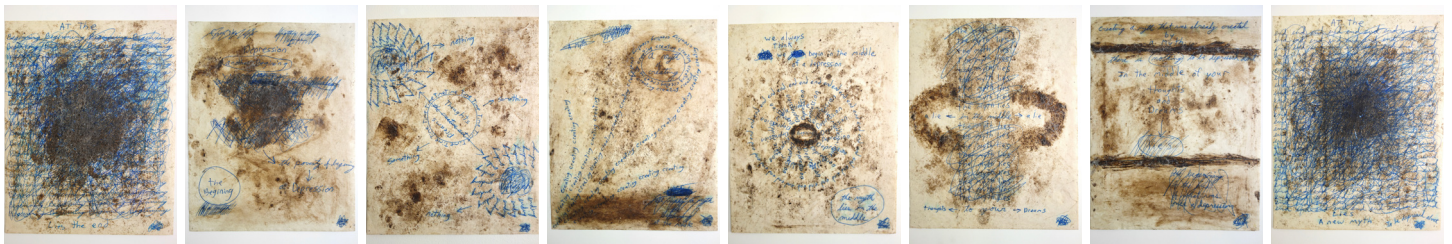


Well XXVI
2020
Neon, MDF, acrylic, paint, hardware
12 x 4.5 x 19.5 inches
Not for sale.
Courtesy of Maria Uribe

PORTALS

Curated by Stephanie Sherwood

Howard Schwartzberg



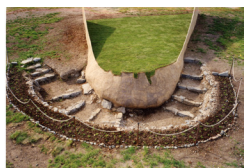
Beginning and End Drawings

1993

Limited edition print of original drawings, Edition 1 / 10

13.75 x 11 inches each

\$500 for complete set of 8 prints



Documentation of Surface

1999 - 2000

Environmental earthwork created at Socrates Sculpture Park, Long Island City, New York.

Earth, granite, burlap, metal, grass.

16 x 43 x 40 feet



Open Space Bandage Painting (cerulean blue)

2020

Canvas, paint, wood, hydrocal, foam, glue, staples, tacks

9.5 x 9 x 6 inches

\$2,000



Open Space Bandage Painting (black oval split wood)

2020

Canvas, paint, wood, hydrocal, foam, glue, staples, tacks

15.5 x 8 x 3.75 inches

\$2,500

PORTALS

Curated by Stephanie Sherwood

Svetlana Shigroff



Intermit Relations
2021
110 x 104 x 9 inches
\$16,200



Sim-Ya
2019
Reclaimed and new fabrics, fabric dye, acrylic paint, metal charms
84 x 45 inches
\$6,850



Welcome, Home
2018
Reclaimed and new fabrics, dye, acrylic, metal charms
84 x 48 x 36 inches
\$10,450



Mask V. 3
2020
Canvas, air brush, cotton thread, acrylic, felt
21 x 19 inches
\$760



Mask V. 1
2020
New and reclaimed fabric, oil pastel, cotton thread
14 x 18 inches
\$480



Refusal of Man
2020
Canvas, air brush, cotton thread
31 x 33 inches
\$1,850